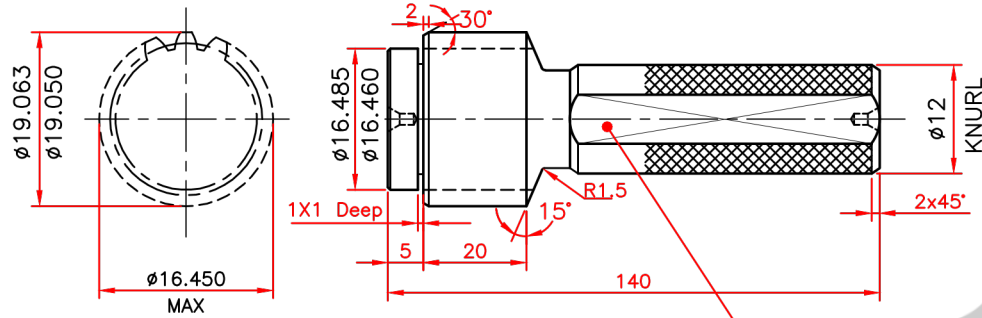


GS-IP-2219

GO GAUGE

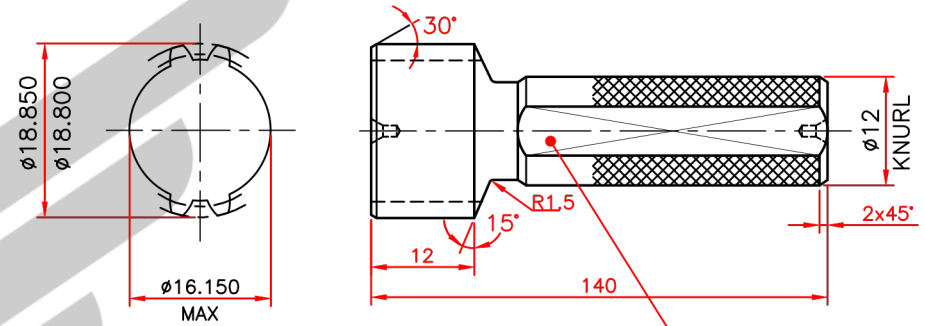


MARKING: Z-14, DP-20/40, P.A.-30° "GO"
DRG. NO. BL1717535-1

ALL DIMENSIONS ARE IN MM

GS-IP-2220

NOGO GAUGE



MARKING: Z-14, DP-20/40, P.A.-30° "NOGO"
DRG. NO. BL1717535-1

COMPONENT DATA	
INTERNAL SPLINES	
MODULE / DP	1.27 20/40
P.A.	30°
NO OF TEETH	14
MAJOR DIA.	20.472/20.117
MINOR DIA.	16.637/16.535
PITCH DIA.	17.7800
BASE DIA.	15.3979
FORM DIA.	19.050
Sv.EFFECT MIN	2.007
Sv.ACTUAL	MAX. 2.069 MIN. 2.043
DIM.BETWEEN PINS	15.878/15.832
PIN DIA.	1.829

INVOLUTE SPLINE PLUG GO GAUGE DATA	
NO. OF SPLINES Z	14
MAJOR DIA.	19.063/19.050
FORM DIA. (REF.)	16.280
MINOR DIA. (REF.)	16.150 Max
CIRCULAR TOOTH THK	2.012
DIMN. Over PIN S1	21.710/21.705
PIN DIA.	2.500
WEAR LIMIT	
WEAR LIMIT S.W.	2.007
DIMN Over. PINS S1	21.698
PILOT DIA.	16.485/16.460


INVOLUTE SPLINE PLUG NO GO GAUGE DATA	
NO. OF SPLINES Z	2+2
MAJOR DIA.	18.850/18.800
FORM DIA. (REF.)	16.280
MINOR DIA. (REF.)	16.150 Max
CIRCULAR TOOTH THK	2.069
DIMN. OVER PIN S1	21.794/21.788
PIN DIA.	2.500

**Własność intelektualna firmy:
Tradensa Sp. z o. o.**

Ul. Uroczą 5a, 62-081 Wysogotowo
NIP: 781-20-22-828
KRS: 0000910290

Allowable Errors As per DIN 3962, CLASS-5

TOOLS AND MACHINE PARTS

 <p>GAUGE MANUFACTURED BY : Capital Tool Industries 7-A, Industrial Estate, Patiala-147004, INDIA E-mail - capitaltool@gmail.com Ph:+91-175-2351089 , +91-9876091718</p>	REV.	REVISION DETAILS	MATERIAL: OHNS	INVOLUTE PLUG GAUGE Z-14,DP-20/40,PA-30°	REFERENCE DRG NO DRG. NO. BL1717535-1
			HARDNESS : 60-62 HRC	CUSTOMER --	
			PROJECTION	DRN 06.09.2020 CHD 06.09.2020 APPR R.S.S	GS-IP-2219 GS-IP-2220